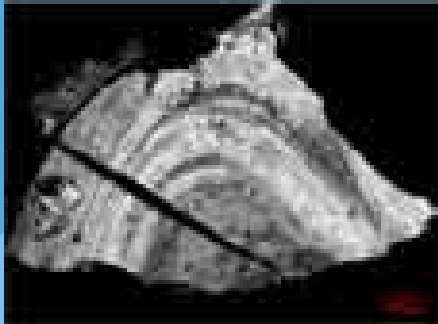
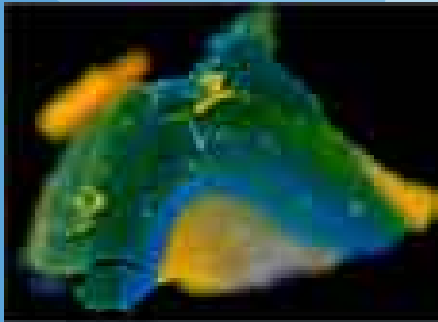


STACHEM

Science and Technology for Archaeology and Cultural Heritage in the Eastern Mediterranean



A project within the European Union
Seventh Framework Programme
Capacities Specific Programme,
Research Infrastructures

STACHEM will contribute to
the development of a regional
strategic plan for research
infrastructures devoted to
archaeological sciences and
digital heritage in the Eastern
Mediterranean

Contact information

Project coordinator: Prof. Franco Niccolucci, f.niccolucci@cyi.ac.cy

Scientific coordinator: Dr Kirsi Lorentz, k.o.lorentz@cyi.ac.cy

The Science and Technology in Archaeology Research Center,
The Cyprus Institute, Guy Ourisson Building,
PO Box 27456, Nicosia 1645, Cyprus.

Tel: +357 22208600, **Fax:** +357 22208625
www.cyi.ac.cy, <http://starc.cyi.ac.cy/stachem>



STACHEM is funded by the European Commission under the Community's Seventh Framework Programme (Project Number 228130). However, the content of this leaflet reflects only the authors' views and the Community is not liable for any use that may be made of the information contained herein.

STACHEM: Concept and project objectives









The Eastern Mediterranean region, including Greece, Asia Minor, Cyprus and the Levant, is probably one of the richest areas of the world as far as archaeological heritage is concerned, and undoubtedly one of the most investigated, however scientific analysis of finds and documentation, preservation and communication services lack a regional strategy. There are excellent research centers in the region (some of which are members of the present partnership) and certain elements of advanced research infrastructure, but coordination and policies are indeed lacking. This has several adverse effects, such as duplication of efforts, lack of interoperability at the data level, and in general missed opportunities for collaboration among research institutions. In addition there is a clear shortage of scientific and technical resources, such as laboratories of applied chemistry and physics for archaeology, multimedia communication centers, digital libraries, etc., so that analyses and data processing very often have to be carried out far away from the region.

In this context, the Cyprus Institute (www.cyi.ac.cy) has launched the Science and Technology for Archaeology Research Center (STARC), which is designed to become a significant scientific and technological resource for the regional archaeology and cultural heritage communities. It is important to ensure that, from its earliest design and planning phase, STARC is adapted to the needs and demands of these communities, and that its development is integrated in European and regional strategies for the build-up of research infrastructures in the relevant fields.

STACHEM is formed of a consortium of partners representing the highest level of scientific and technological expertise in the focus fields of the project. The goal of this project is to **contribute to a regional strategic plan for research infrastructures devoted to archaeological sciences and digital heritage in the Eastern Mediterranean**, and simultaneously to support and complement the design and planning process of STARC, ensuring that it is embedded in the said strategy, **closely adapted to the regional needs and integrated in the Euro-Mediterranean environment of archaeological sciences and digital heritage**.

The outcomes of the STACHEM project will include suggestions for joint trans-national activities, based on the exploration of opportunities for synergies and coordination, as well as a user-led assessment of needs, guidelines for good practice and directions for further infrastructure development. It will involve the build-up of a community of users, with periodic workshops for continuous monitoring and update. In addition to its benefits on the European and regional scales, the project will also have an impact at the national levels for the medium and long-term strategy of the institutions involved in the project and their partners. The proposal therefore brings a unique opportunity for STARC's design and planning to receive significant input from various studies relevant to its development, and more generally for the archaeology and cultural heritage communities in the region to progress towards a regional strategic plan. Contributing to such a plan is an essential objective of the project, and rather than be limited to theoretical statements, the contributions of STACHEM will be tested through a built-in implementation concerning STARC and the other partners.

STACHEM: Project partners

Partner	Short name	Website
 The Cyprus Institute (coordinator)	Cyl	www.cyi.ac.cy
 Archaeological Research Unit, University of Cyprus	UCY- ARU	www.ucy.ac.cy/ema
 Centre National de la Recherche Scientifique – Laboratoire du Centre de Recherche et de Restauration des musées de France	CNRS - LC2RMF	www.c2rmf.fr
 Research Center “Athena”, Cultural and Educational Technology Institute	CETI	www.ceti.gr
 Institute of Nautical Archaeology at Texas A&M University	INA	www.inadiscover.com
 Ministero per i beni e le Attività Culturali	MIBAC	www.beniculturali.it
 University of Athens, Department of Archaeology	UoA	http://archaeology.arch.uoa.gr
 Weizmann Institute, Kimmel Center for Archaeological Science	Weizmann	www.weizmann.ac.il

